

Essential for fuel-saving measures!!

Flow meter & auto-stop gun nozzle equipped drum pump for kerosene and diesel

**Standard measuring and stopping!**

Reduce expenses through usage management!

**1** Automatically stops discharge when liquid tank is full!  
Prevents spillage!

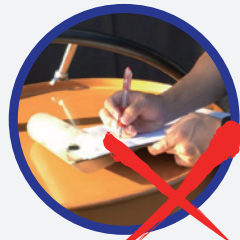


Spill on the floor...

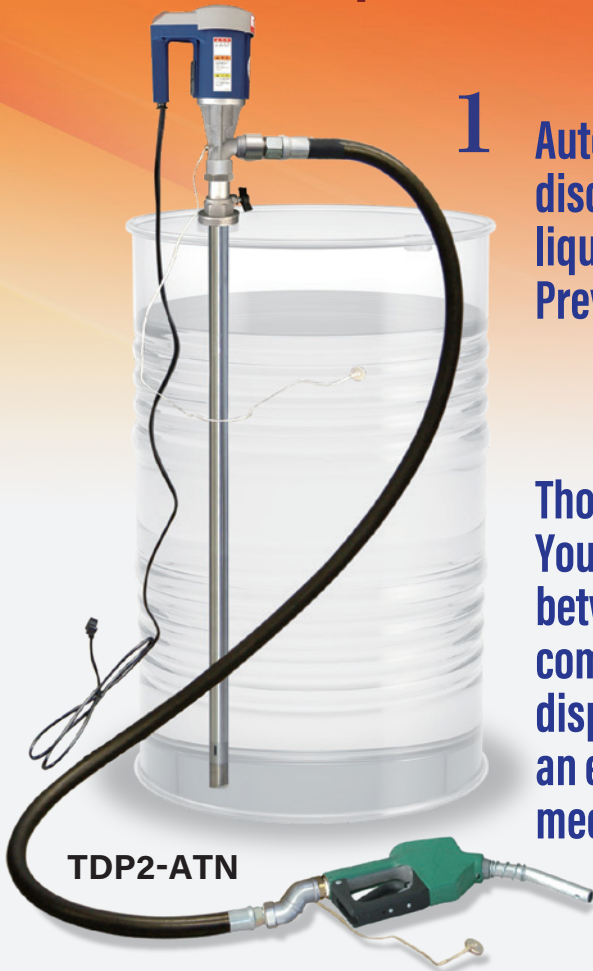
**Improvement**



Thorough usage management!  
You can choose between a compact digital display meter and an easy-to-read mechanical large meter.



**Improvement**



TDP2-ATN

Equipped with a flow meter  
(on the nozzle side)

**2**



TDP2-ATNK24

ATNH-20K24

Easy-to-read flow meter on the nozzle side



Equipped with a flow meter  
(on the main unit side)

**3**



TDP2K24-ATN

TB-K24-FM

ATNH-20

All-in-one design for a clutter-free setup



Equipped with a large meter

**4**



TDP2M33-ATN

MK33-25D

ATNH-20

Large meter for easy visibility and convenient management even from a distance



\*Can accommodate hose extensions up to 6 meters

# Stylish and compact!

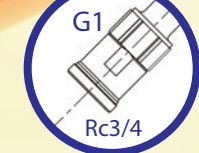
## A manually operated gun nozzle type designed to maximize ease of use

Adopting a lightweight and compact universal design, we employ a manual gun nozzle. Featuring a simple yet highly durable structure, it is less prone to malfunctions. Refined to perfection based on customer feedback, it is ideal for transporting kerosene and diesel.



TDP2-N

### Connection diameter



5

### With cap (φ19)

Drip-resistant design to prevent oil buildup and adhesion.

### Double O-ring

We use a dual-layer NBR seal to prevent liquid leakage.

### Lock & stopper

It can be secured in the dispensed state and functions as a nozzle lock when not in use. It can also be easily removed when not needed.

### Built-in filter



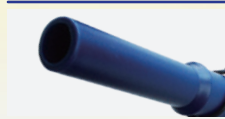
It features an internal SUS filter (100 mesh) that prevents fine foreign matter from entering. The filter is easy to remove and clean, making maintenance simple.

### Grip



We've adopted a stylish straight type. It's designed to be easy to grip regardless of hand size.

### Dispensing outlet



A rounded tip that prevents damage to the mesh inside the water tank.

### Swivel connection part

By incorporating a swivel hose nipple structure, we prevent hose twisting and liquid leakage.

Equipped with a flow meter (on the nozzle side)

6

TDP2-NK24



GN1-POM20 AdK24

Equipped with a flow meter (on the main unit side)

7

TDP2K24-N



TB-K24-FM

GN1-POM20

Equipped with a large meter

8

TDP2M33



MK33-25D

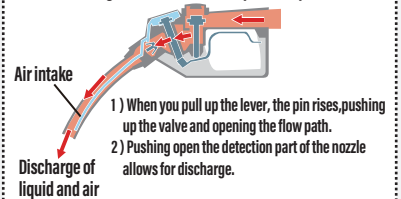
GN1-POM20

## 《Specifications》

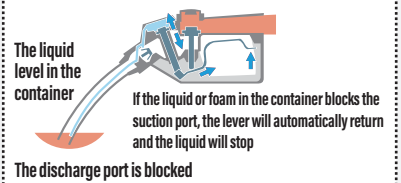
No.	1	2	3	4	5	6	7	8
Model	TDP2-ATN	TDP2-ATNK24	TDP2K24-ATN	TDP2M33-ATN	TDP2-N	TDP2-NK24	TDP2K24-N	TDP2M33
Power supply (V)	200							
Current (A)	1							
Rating (minutes)	Continuous operation possible							
Discharge pressure (MPa)	0.04							
Maximum discharge rate (L/min at 1cP)	20			36		32		
Maximum push-up lift (m)	2			4				
Suction lift (m)	2							
Accessories	Oil-resistant rubber (2m x φ20)							
	Discharge hose							
	Nozzle	ATNH-20	ATNH-20K24	ATNH-20		GN1-POM20	GN1-POM20K24	GN1-POM20
Flow meter	-	-	TB-K24-FM	MK33-25D	-	-	TB-K24-FM	MK33-25D
Power cord (m)	2							
Weight (kg)	5.9	6.3	6.3	6.4	4.6	5.0	5.0	6.1

## Auto-stop gun nozzle mechanism

### 1 State during use Red arrow... Liquid flow path



### 2 Automatic stop mechanism Blue arrow... Main movements of the internal structure



\*The product is suitable for indoor use only, with a temperature range according to the Electrical Appliance and Material Safety Law (PSE mark) : 0-40 degrees Celsius. \*Auto-stop gun nozzles and flow meters cannot be used with free-fall weight. \*Compatible with hose extensions up to 6 meters.

# AQUA SYSTEM CO.,LTD.

TEL +81-749-30-9126 <http://en.aqsys.co.jp/>  
FAX +81-749-23-9122 mail [trade@aqsys.co.jp](mailto:trade@aqsys.co.jp)

1-3-1, Kyo-machi, Hikone-city, Shiga, 522-0081, Japan name : FL-2023-05  
2023.07 AZZZ [F]