

For 100L and 200L Open Drum Can
Air Type Vacuum Cleaner

MANUAL

■ APPQO-HP2



Contents:

2	For Safety
2 ~ 5	Before the use
5	Operation Conditions
		How to use and to stop
6	Trouble Shooting
		Filter Maintenance
7	Specification
		External Dimensions
8 ~ 9	Drawing and Part List
10 ~ 11	Assurance & After Service

For Safety:

- This Manual covers important points for safe and correct operation. We request all the users/dealers/distributor to read this Manual carefully and understand correctly, before this Product is used. (Incorrect operation may result in troubles and/or accident)
- Be noted to keep this Manual properly, so that the Manual can be immediately read at any time, whenever needed.



This sign means that incorrect operation may highly result in possible risk causing death or serious injuries.



This sign means that incorrect operation may possibly result in risk causing death or serious injuries.



This sign means that incorrect operation may result in injury or property loss.

Before the use



Operate the Product correctly, after the manual for liquid is carefully read.
.....



In case the used liquid touches the body or skin:
In case the used liquid touches the body or skin, or is mistakenly drunk, immediately take care properly, according
.....



- **Be sure to use the Product at “No Fire” zone.**

Be sure the Product to be earthed, before the operation, when the explosive liquid is used, or operated at hazardous area. Static electricity may cause the fire.



Warning



- **Operate at safe places only:**

Operate at safe places only, where no infants/children play. Keep watching while operated.



- **Contact a doctor:**

Whenever the operators feels uncomfortable during the operation, immediately contact a doctor.



- **Wear the protectives:**

Always wear the protectives, according to the liquid manual.



- **Do not disassemble, repair and/or remodel:**

Unauthorized person is not allowed to disassemble, repair and/or remodel the Product.



- **Always use new liquid:**

Whenever the liquid is changed, be sure to wipe previous liquid out, completely wash away, and then apply new liquid. Once the liquids are mixed together, chemical reaction may be generated.

- **Acceptable temp. for the liquid:**

Acceptable temp. for the liquid is 0-60°C.



Caution



○ **Contact us for inspection or repair**

In case the Product does not properly work or anything unusual is found, immediately stop the operation, and contact your purchase shop for inspection or repair.

Otherwise, it may cause an accident or injury.



○ **Do not shock the Product:**

The shock may trouble normal function, and may cause trouble and/or liquid leakage.



○ **After used, completely take the liquid in a cleaner out:**

The remained liquid may cause the rust, which may cause trouble or ruin the performance.

○ **Remove the moisture in the compressed air:**

In case of handling the liquid, remove the moisture in the compressed air by air-filter. (Separately sold)

○ **In case the product is moved or a person in charge is changed:**

Always attach this Manual with the Product or transfer together.

○ **In case this Manual is lost or damaged:**

Please order to sales shop.

○ **APPQO-HP2 is for indoor application only:**

In case used outdoor, be sure to apply the cover or to operate in a hut, so that the product is protected from wind and/or rain.

○ **The installer/seller of this Product is requested:**

To pass this Manual to the person in charge of the operation.

○ **Be sure to use the compressor with 10Hp or higher. (0.4~0.6MPa)**

○ **This Product is designed for a drum can application**

Do not use for any other applications.

Pail can is applicable for powder only.

- If the air is filled in, the air is discharged from the exit mouth. Pay attention for its direction.
- Just before the tank is full, the liquid may get out together with discharged air.
- Be sure to use the hose with dia.3/8 or bigger:
If the hose dia. is not big enough, the pressure is lost, resulting in less performance.
(The couple with 20PM is attached)

Operation:

Operation Condition

1. This Product can be applied for 100 L and 200L Open Drum Can only (according to JIS)
※Special plate for 100L &200L is necessary before the use
(To be separately purchased)
2. Supplying Air Pressure : 0.4~0.6Mpa
3. Applicable Viscosity: Up to 3,000cP.



Plate



To show how to place the plate

How to use

1. Make sure if supplying pressure is strong enough(0.4~0.6Mpa).
2. Then, supply the compressed air to air coupler.
3. Gradually open ball valve.
(Then, this sucks through the head of round type nozzle)
4. Slightly adjust by ball valve to start sucking operation.

How to stop:

1. Tighten ball valve to stop the operation.
2. Remove air hose from air coupler.
3. In case the liquid remains in a pump, it may cause the rust, which may result in trouble or performance defect.

Trouble Shooting:

1. In case sucking function does not work,
 - Make sure if air hose is firmly fixed.
 - Make sure if air valve is properly open.
 - Make sure if the cap for 100L/200L drum can is not deformed/damaged.
 - Make sure if special top plate is used.
 - Make sure if the closed drum can is not cut or damaged
2. In case sucking volume is not sufficient,
 - Make sure if the pressure to pump is strong enough.
 - Make sure if air valve is fully open.
 - Make sure if viscosity is not too high.

In case any unusual case happens, do not disassemble the product by yourself. Immediately contact us or our sales shop.

Filter Maintenance

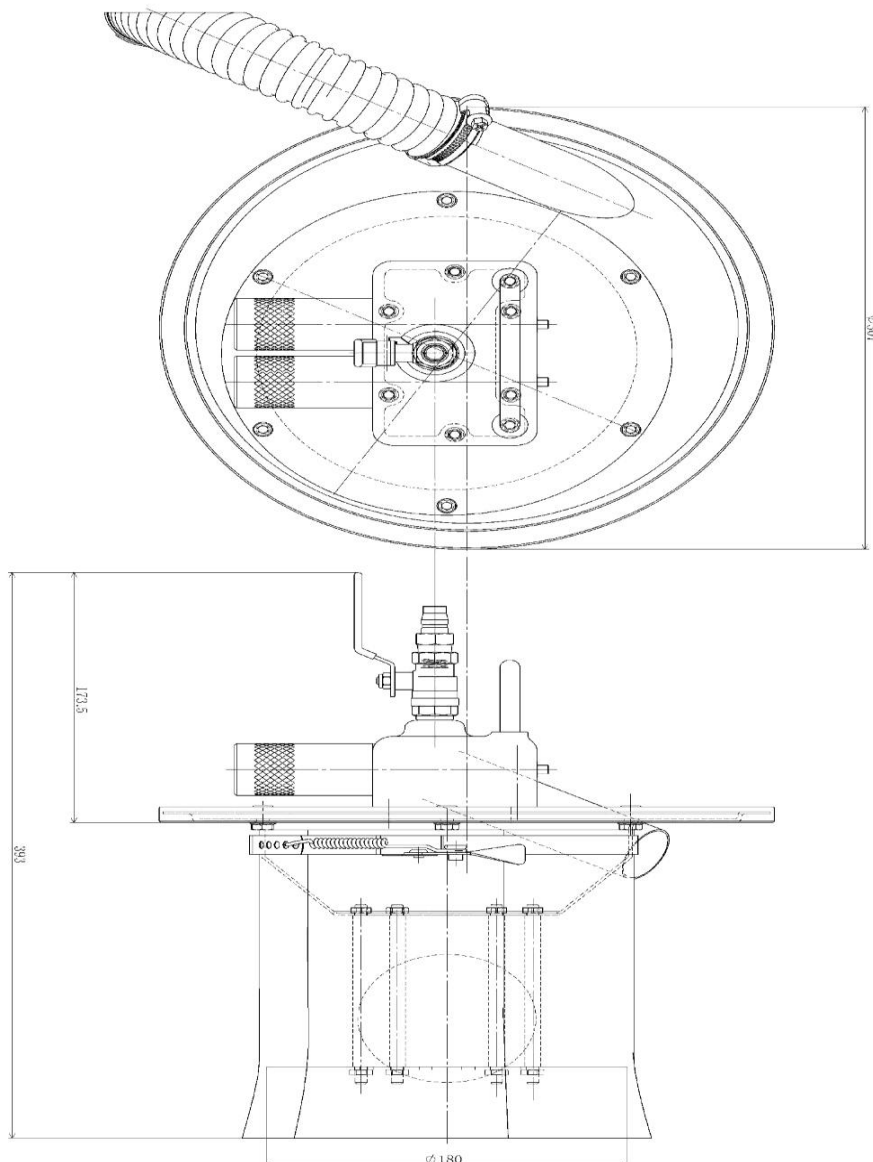
1. Take S type spring band out to remove the filter.
Washing job (air blow, washing with cleaning agents) depends on how badly it is stained.
2. The clogged filter results in sucking power, and the filter should be regularly cleaned

Specifications:

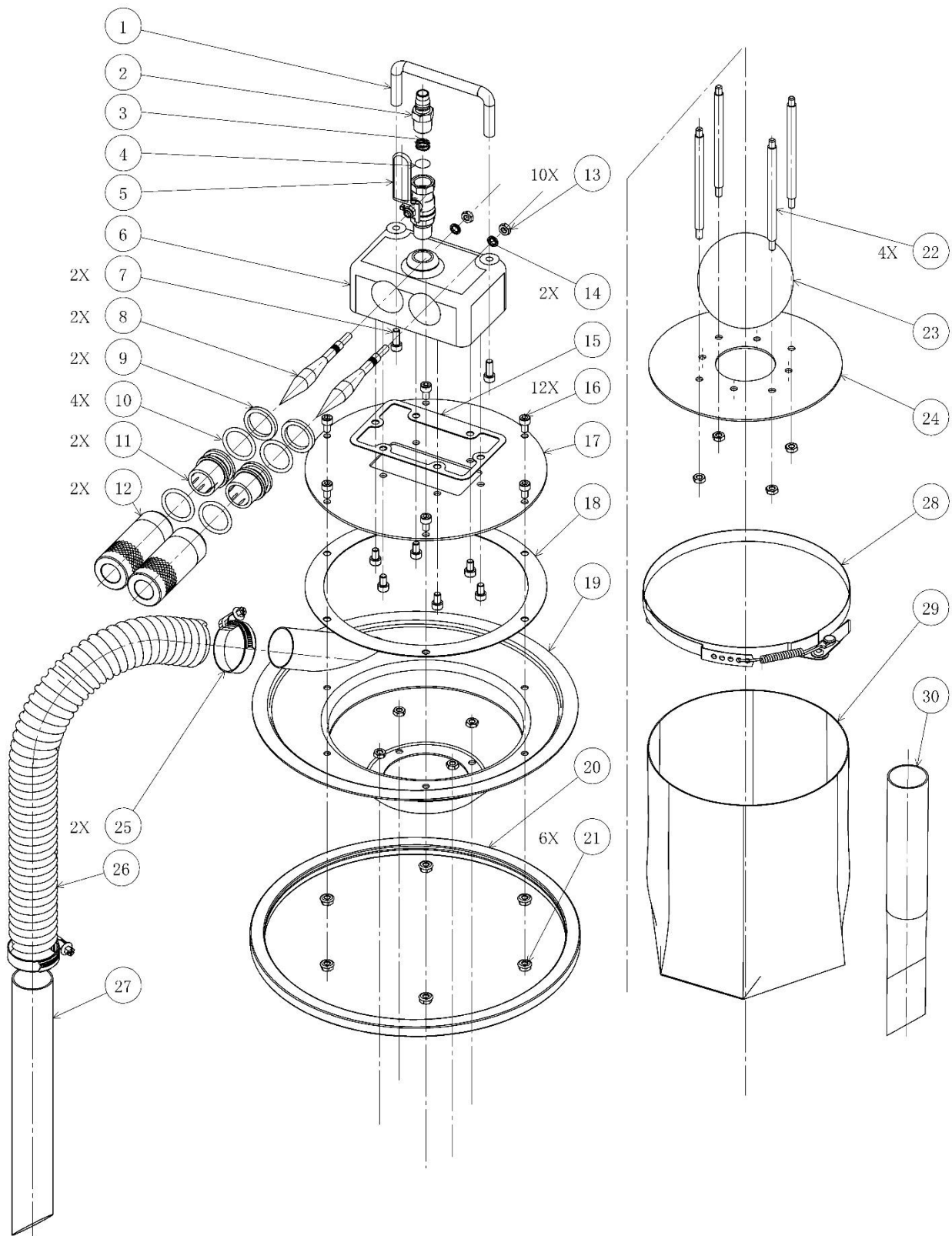
Model: APPQO-HP2

Model	Liquid	Acceptable viscosity	Sucking Volume (L/min)	Lifting Height	Materials			Noise (dB)
					Main body Nozzle	Packing	Hose	
APPQO-HP2	Oil	3,000cP	80	2	Aluminum	NBR	PVC	90

External Dimensions:



Parts Drawing • Parts List



No.1	Parts Name	DRW No.	Material	Q'ty	Remarks
1	Handle Pipe		SUS 304	1	TT0-10-100A
2	Air Coupler	KXB0016		1	30PM
3	Compressed Spring		SUS 304	1	1*13 OD*1n*3N*6H
4	Strainer		SUS 304	1	
5	Ball Valve		C3771BE	1	R3/8, Rc 3/8
6	Main Body	APD0343	AC2B	1	
7	Bolt with Hexagon Hole		SUS 304	2	M6, L=16
8	Air Guide Bar	APD0105	SS330B-D	2	
9	Spacer 4.0 SUS	APD0418	SUS 304	2	
10	O Ring		NBR	4	P 28
11	Ejector	APD0106	A6063	2	
12	Exhaust	APD0104	A6063	2	
13	Nut with Hexagon Hole		SUS304	10	
14	Sealing Washer		NBR	2	M6
15	Packing A	APD0338	CR Rubber	1	
16	Bolt with Hexagon Hole		SUS304	12	M6, L=10
17	Plate	APD0339	SPHC	1	
18	Rubber Packing	APD0341	CR Rubber	1	
19	Lower Portion of Product	APD0313	SPHC	1	
20	V Packing	APD0239	NBR	1	
21	Flange Nut		SUS 304	6	M6
22	Sustainer for stopper	APD0242	SUS304B-D	4	L=105
23	Float Ball	APD0321	PVC (Red)	1	S Dia. 89
24	Plate for stopper	APD0236	SUS 304	1	
25	Hose Clip (Large)		SUD 304	2	SGT W2/12 25-40
26	Hose 40A		PVC	1	Inner Dia.38, L=2000mm
27	Round type Nozzle	APD0327	A6063	1	Ext. Dia.38, Thickness:1.5, L=300mm
28	S Type, Spring Band	APD0091	SUS 303	1	Width: 13mm, Dia. 185.5
29	Filter	KX00919	PP (White)	1	
30	Square type Nozzle	APD0328	A6063	1	Ext. Dia.38, Thickness:1.5, L=308mm

Assurance & After Service

Thank you for choosing our product. Our product is produced strictly under our regulations and quality control. However, if any of the defects, related with our production processes, is found, our assurance covers, according to the below conditions.

1. To repair:

To order the parts or request for repair, inform us Part No., Mfg No., the purchased date with the receipt and then contact the purchased shop.

2. Within 12 months after the purchased date, if the below case* happens, we will repair it at free of charge.

* Despite of regular maintenance and/or inspection specified in Manual, if the trouble or damage happens due to the defect of our design or assembling, within 12 months from the purchased date.

※However, we are not responsible for all and any related expenses or other damages related with the above trouble and/or damage due to the defect of the product.

※When the free repair is taken care, if the part replacement is judged necessary by us, as the consumables, the expenses for such replaced parts shall be borne by the user.

3. If the assurance period of 12 months is over, or the above assurance condition does not meet even within the assurance period of 12 months, the repairing expenses shall not be covered by us, but borne by the user.

(Also, in case our product is applied to other manufacturer's product, we take no responsibility and our assurance cannot be applied)

4. In any case, delivery cost both to us and from us shall be borne by the user/customers.

5. Exception from our responsibility (even within 12 months from purchased date)

① Any problems, due to wrong handling (not following our Manual)

② Any problems, due to repair, disassemble or remodel by a third party.

③ Any problems, due to improper storing or improper maintenance.

④ Any problem, without evidence to show the purchase of our product, such as invoice or receipt etc.

⑤ Unusual part consumption, due to heavy uses.

Contact the below for any question/request on the repair or after-service within assurance period.

AQUA アクアシステム株式会社
SYSTEM CO.,LTD. ☎ 0749-23-9123

FAX 0749-23-9122

〒522-0058 滋賀県彦根市京町1-3-1 K1ビル

E-mail aqua@aqsys.co.jp

<http://www.aqsys.co.jp/>